

Charter School

Project update: 13 October 2022

John Ryan, Programme Manager, Capital Projects, LBS

Alison Harbottle, Head Teacher, Charter School



Department
for Education



The Charter Schools Educational Trust
Transforming lives through the power of inclusive education

Dulwich Hospital 2014



Department
for Education

Southwark
Council
southwark.gov.uk



The Charter Schools Educational Trust
Transforming lives through the power of inclusive education

Chateau Building and Hall



Department
for Education

Southwark
Council
southwark.gov.uk



The Charter Schools Educational Trust
Transforming lives through the power of inclusive education

SEN provision and garden



Department
for Education

Southwark
Council
southwark.gov.uk



The Charter Schools Educational Trust
Transforming lives through the power of inclusive education

Landscape and masterplan

This is the Phase 2 Landscape Masterplan, based on the design principles established within the original sitewide masterplan.

The design has been updated to respond to amendments to the layout and construction of the school building, and the addition of 200m² of additional area for a specialist Autism Spectrum Disorder (ASD) unit and dedicated external space. It has also evolved to achieve necessary access and circulation for maintenance and emergency vehicles, and as part of the ongoing dialogue with the School.

- | | |
|--|---|
| ① Main gate - existing vehicular and pedestrian gates retained | ⑧ Soft social space |
| ② Staff parking and SEN drop-off | ⑨ Hard social space |
| ③ Cycle parking | ⑩ War memorial |
| ④ Outdoor dining (within Phase 1) | ⑪ Entrance to tunnel under railway line |
| ⑤ Feature lawn and seating | ⑫ SEN External Space |
| ⑥ MUGA | ⑬ Proposed Pedestrian gate |
| ⑦ Fixed play equipment | ⑭ School Square |



Department
for Education

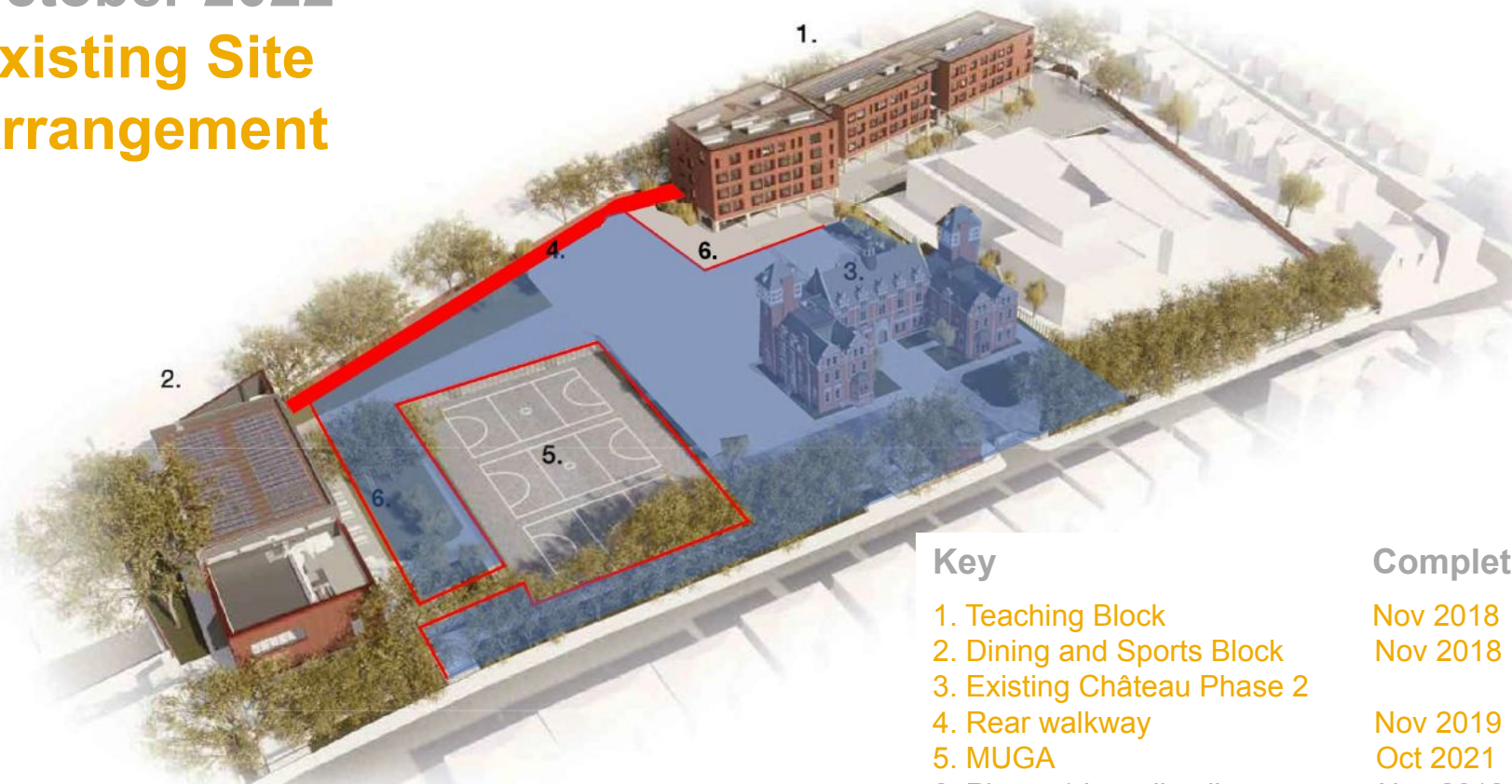
Southwark
Council
southwark.gov.uk



The Charter Schools Educational Trust
Transforming lives through the power of inclusive education

October 2022

Existing Site Arrangement



Key

- 1. Teaching Block
- 2. Dining and Sports Block
- 3. Existing Château Phase 2
- 4. Rear walkway
- 5. MUGA
- 6. Phase 1 hoarding line



Phase 2 Site Area

Complete

- Nov 2018
- Nov 2018
- Nov 2019
- Oct 2021
- Nov 2018



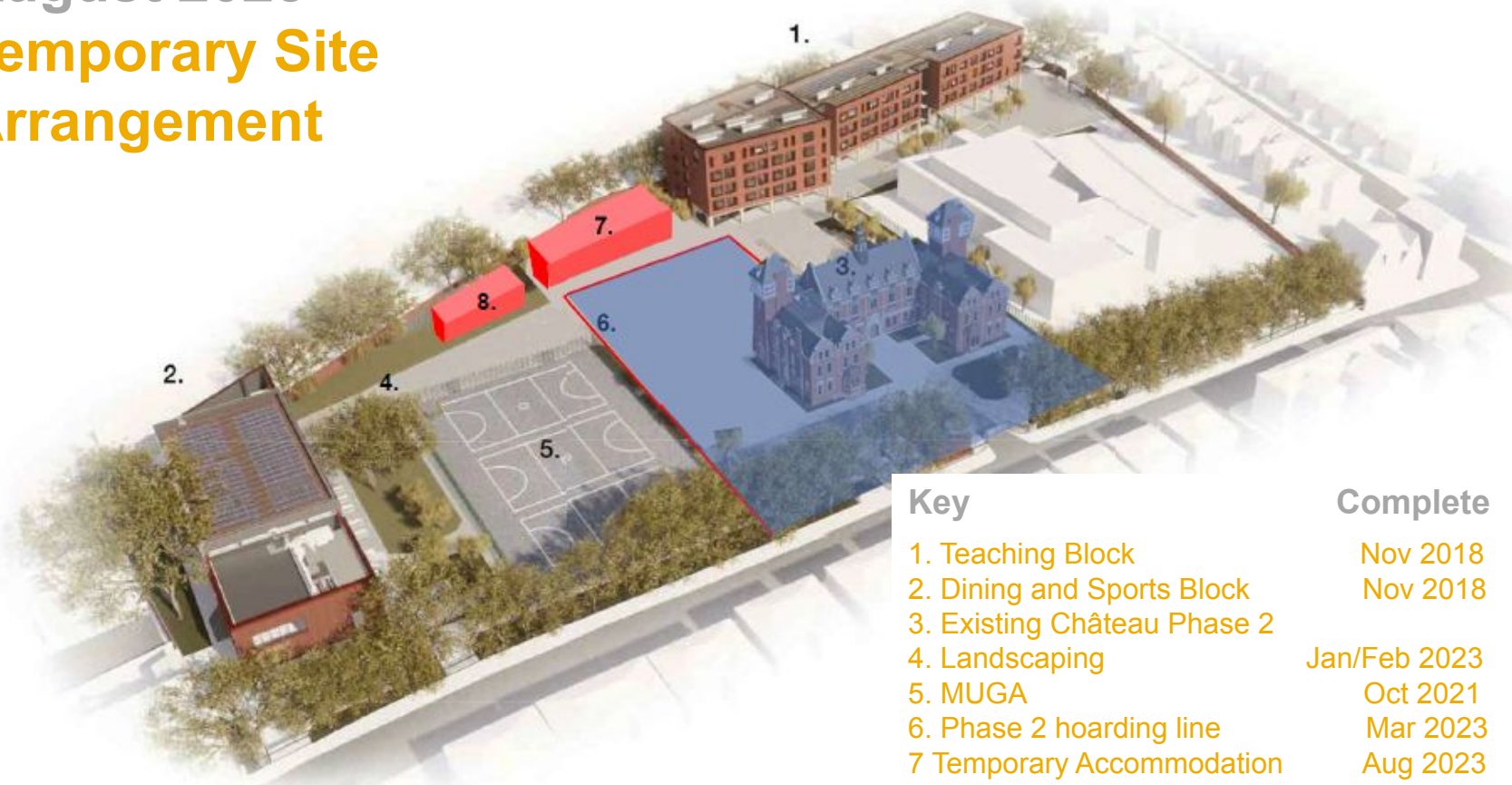
Department
for Education

Southwark
Council
southwark.gov.uk



The Charter Schools Educational Trust
Transforming lives through the power of inclusive education

August 2023 Temporary Site Arrangement



Key

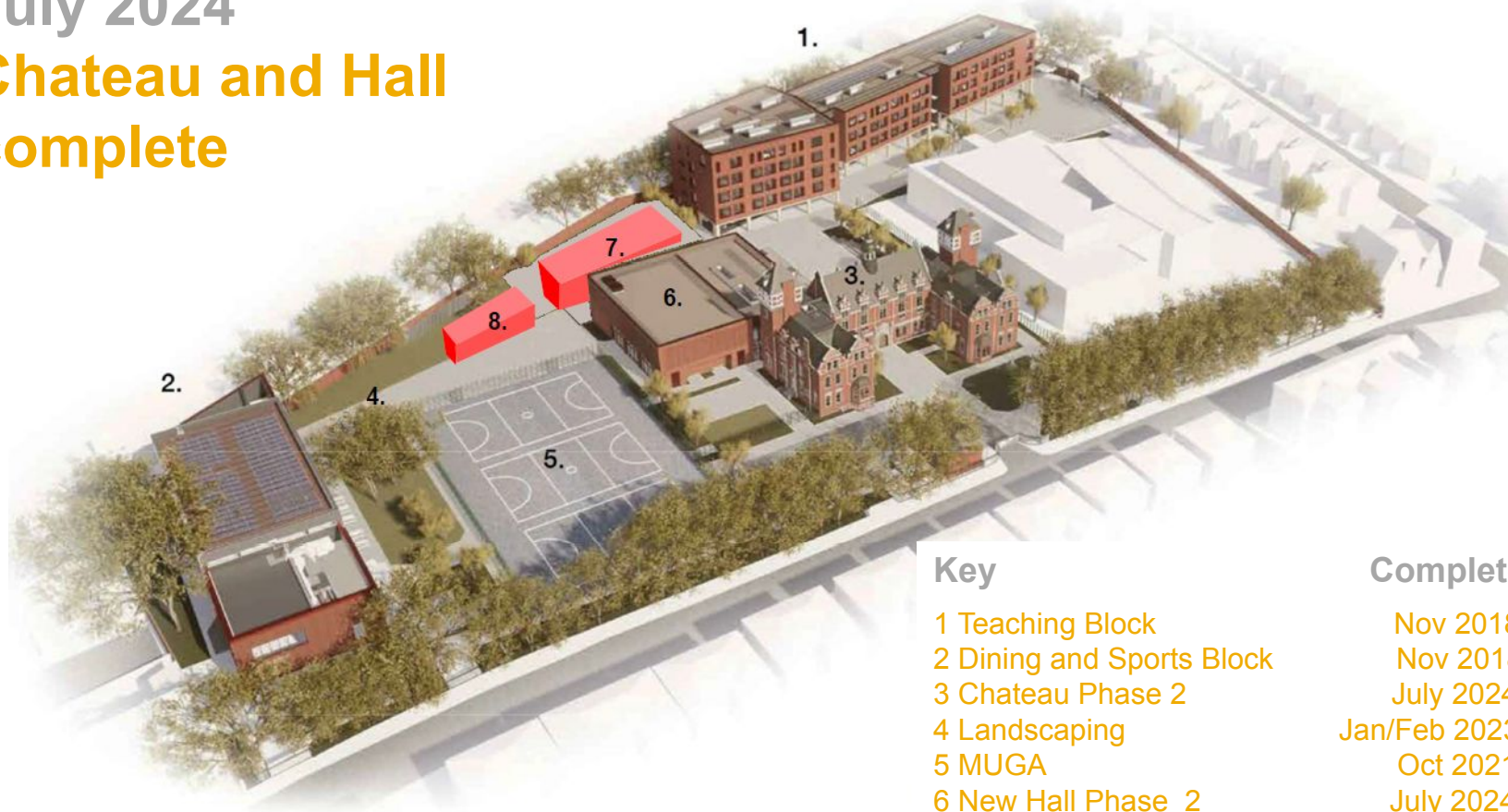
Complete

1. Teaching Block	Nov 2018
2. Dining and Sports Block	Nov 2018
3. Existing Château Phase 2	
4. Landscaping	Jan/Feb 2023
5. MUGA	Oct 2021
6. Phase 2 hoarding line	Mar 2023
7 Temporary Accommodation	Aug 2023
8 ASD Temporary Accommodation	Aug 2023

 Phase 2 Construction Site Area

July 2024

Chateau and Hall complete



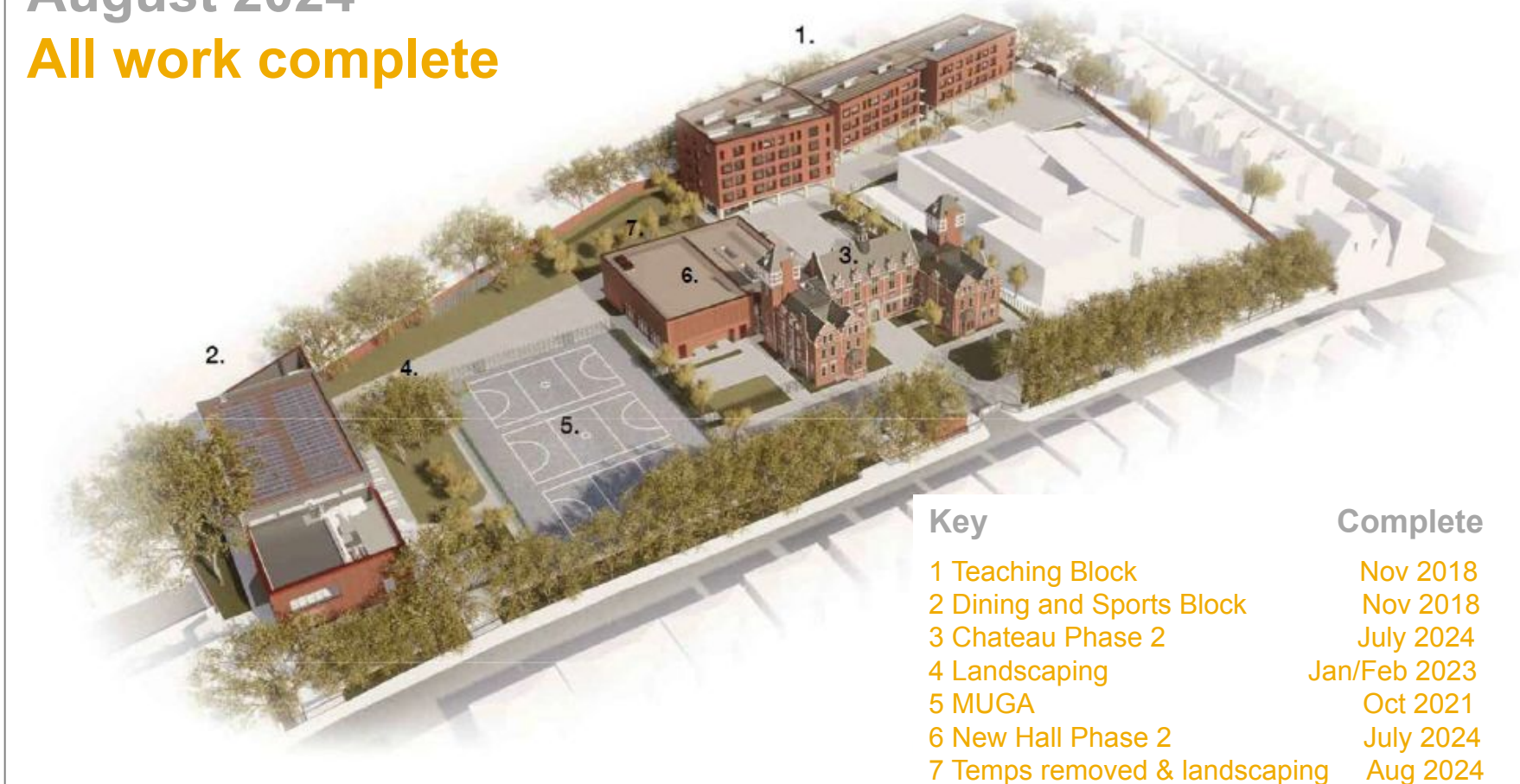
Key

1 Teaching Block	Nov 2018
2 Dining and Sports Block	Nov 2018
3 Chateau Phase 2	July 2024
4 Landscaping	Jan/Feb 2023
5 MUGA	Oct 2021
6 New Hall Phase 2	July 2024
7 Temporary Accommodation	Aug 2023
8 ASD Temporary Accommodation	Aug 2023

Complete

August 2024

All work complete



Key

1 Teaching Block	Nov 2018
2 Dining and Sports Block	Nov 2018
3 Chateau Phase 2	July 2024
4 Landscaping	Jan/Feb 2023
5 MUGA	Oct 2021
6 New Hall Phase 2	July 2024
7 Temps removed & landscaping	Aug 2024

Complete